



Darlington Snacks Product Specification Sheet

Product Name:

Appleways 2.4 oz Simply Wholesome Apple Oatmeal Bars – Individually Wrapped

Product Description:

Appleways Simply Wholesome Apple Soft Oatmeal Bars are a healthy alternative to conventional snacks. Packed with whole grains and all-natural flavors, everyone can feel good enjoying them as a tasty anytime snack. They come pre-baked and individually wrapped with a 180-day shelf life in dry storage. Appleways Apple 2.4 oz Soft Oatmeal Bars meet or exceed the USDA nutritional requirements for a two (2) ounce grain equivalent.

Product Code:	75100
----------------------	-------

Shelf Life:	180 Days
--------------------	----------

Case Count:	160
--------------------	-----

Ingredient Listing:	Nutrition Information:
----------------------------	-------------------------------

Whole Grain Blend (Rolled Oats, Whole Grain Wheat Flour), Enriched Wheat Flour (Whole Grain Wheat Flour, Niacin, Reduced Iron, Thiamine Mononitrate, Riboflavin, Folic Acid), Sugar, Corn Syrup, Invert Syrup, Soybean Oil, Raisin Paste, Canola Oil, Apple Puree (Apples, Ascorbic Acid), Apple Juice Concentrate, Fructose, Cocoa Butter, Eggs, Soy Lecithin, Molasses, Apple Fiber, Salt, Natural Flavors (Contains Milk), Baking Soda.

CONTAINS: WHEAT, SOY, EGG & MILK

Nutrition Facts	
1 Serving per container	
Serving size	2.4 oz (68g)
Amount per serving	
Calories 280	
% Daily Value*	
Total Fat 9g	12%
Saturated Fat 1.5g	8%
<i>Trans Fat</i> 0g	
Cholesterol 5mg	2%
Sodium 170mg	7%
Total Carbohydrates 46g	17%
Dietary Fiber 3g	11%
Total Sugars 19g	
Includes 16g Added Sugars	32%
Protein 4g	
Vitamin D 0mcg	0%
Calcium 20mg	2%
Iron 2mg	10%
Potassium 124mg	2%

*The % Daily Value (DV) tells you how much a nutrient in a serving of food contributes to a daily diet. 2,000 calories a day is used for general nutrition advice.

Product Claims: Appleways 2.4 oz. Apple Soft Oatmeal Bars meet the USDA nutritional requirements to be a two (2) ounce grain equivalent by containing 32g of total creditable grain of which 16 grams are whole grain. The 51% whole grain sources are: Whole Grain Flour and Oatmeal.

- Certified Kosher by Orthodox Union
- Certified by the Whole Grain Council







- Produced in a Nut-Free Bakery

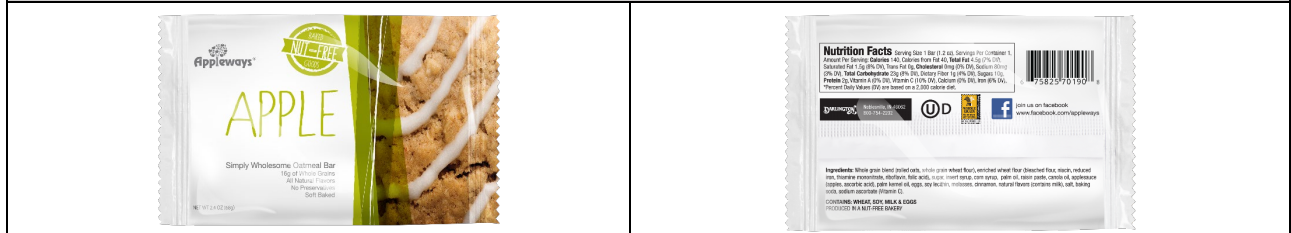


APPLEWAYS + DARLINGTON + CRAVE-N-RAVE
DARLINGTON
 =snacks=

Packaging Information:	
Case Code:	75100
UPC Code:	675825751002
GTIN:	00-675825-75100-2
Case Count:	160
Case Dimensions	19.25" x 16" x 9"
Ship Weight:	26.0 LBS.
Case Cube:	1.60
Pallet Ti:	6
Pallet Hi:	7
Pallet Total:	42 cases
Pallet Weight:	1132 LBS.

Case Label:	
<p>Appleways 2.4 oz WG Soft Oatmeal Apple Bars Approx. 160 ct Bars Product No. 75100 Net Weight 24.0 LBS. (10.8 KG) Gross Weight 26.0 LBS. (11.7 KG)</p>  <p>00675825751002</p>	<p>Produced in a Nut-Free Bakery</p>  <p>UD Certified Kosher by Orthodox Union</p> <p>DARLINGTON =snacks= <small>INDIANAPOLIS, IN 46256</small></p>
<p>Appleways 2.4 oz WG Soft Oatmeal Apple Bars</p> <p>INGREDIENT STATEMENT: Whole Grain Blend (Rolled Oats, Whole Grain Wheat Flour), Enriched Wheat Flour (Whole Grain Wheat Flour, Niacin, Reduced Iron, Thiamine Mononitrate, Riboflavin, Folic Acid), Sugar, Corn Syrup, Invert Syrup, Soybean Oil, Raisin Paste, Canola Oil, Apple Juice Concentrate, Ascorbic Acid, Apple Juice Concentrate, Fructose, Cocoa Butter, Eggs, Soy Lecithin, Molasses, Apple Fiber, Salt, Natural Flavors (Contains Milk), Baking Soda.</p> <p>CONTAINS: WHEAT, SOY, EGGS & MILK</p> <p>Certified Kosher by Orthodox Union Produced in a Nut-Free Bakery</p>  <p>BB: January 01, 2021 193451 JM</p>  <p>00675825751002</p>	

Inner Packaging Information:	
Product Description:	2.4 oz Simply Wholesome Apple Oatmeal Bars
UPC:	675825751903
Packaging Dimensions:	5.75" x 3.625" x 0.625
Net Weight	2.4 oz



To Place Orders, Contact the Darlington Customer Service Department at (800) 754-2202.

This product has been reviewed and approved by Darlington's Vice President of Food Sciences:

Justin Miller CEC, CPC

Justin M. Miller CEC CPC